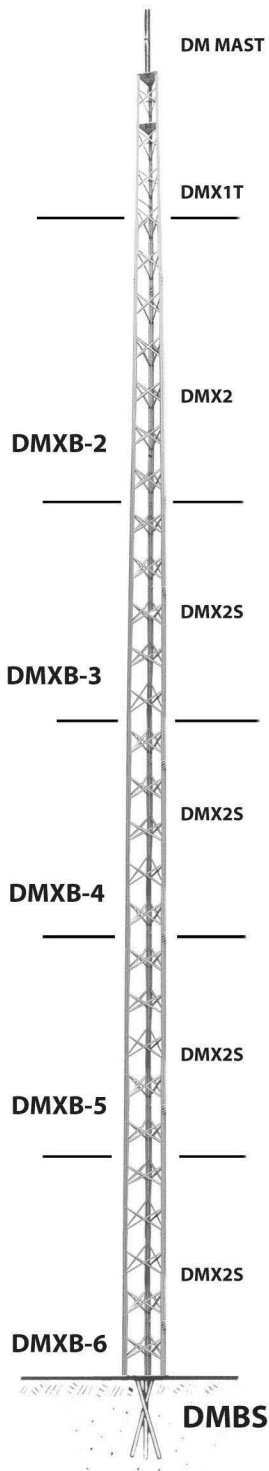


DELHI TOWERS

DMX Bracketed Towers



Features

- "X" brace with beaded channel leg design.
- Hi-strength galvanized steel construction.
- Heat treated aluminum rivets.
- Top sections tapered.
- Universal house bracket.
- No concrete required.

Load Limits

Designed to support equipment up to 3 square ft. (.28 m²) projected wind area, mounted not more than 2.5 sections above house bracket.

Note: Guy wires must be used for larger loads or greater heights above bracket.

Tower Packages

DMXB tower packages come complete with tower sections, DM mast, top plate, rotor plate, BP2S base plate, TMCA mast clamp assembly and DMXHB universal house bracket. Height includes mast.

DMXB-2	20' (6.10 m)	DMXB-5	44' (13.41 m)
DMXB-3	28' (8.54 m)	DMXB-6	52' (15.85 m)
DMXB-4	36' (10.97 m)		

Accessories

- GS123** Guy station
DMBS Galvanized steel drive stakes. Set of three.
 1 1/4" (3.2 cm) x 3' (0.91 m). 7.3 lbs. (3.31 kg)
BP2S Base Plate

Note: For tower accessories or parts that may be ordered separately, please refer to DMX parts and accessories page.

